



SEA PORT®



PRODUCT LIST



Cooked Black Tiger Prawns



Slipper Lobster



Crab Clusters



**Seafood Mix contains Mussels, Shrimp, Imitation Crab & Squid*

SHRIMP

PRODUCT	FORM	ORIGIN	BRAND	PACK	SIZE
Black Tiger Prawns	Head-on • Shell-on	Philippines • Vietnam • Bangladesh	Sea Port	10/1 lb Block	6/8 - 26/30 ct/lb
	Headless • Shell-on	Vietnam	Sea Port	6/4 lb Block	4/6 - 71/90 ct/lb
	Headless • Shell-on	Philippines	AA-1 • Seabreeze • Bohol	6/4 lb Block	4/6 - 71/90 ct/lb
	Headless • Shell-on	Indonesia	Sea Port • PT Lola • Leader	6/4 lb Block	4/6 - 71/90 ct/lb
	Headless • Shell-on	Bangladesh • India	Sea Port • Packer	6/4 lb Block	8/12 - 31/40 ct/lb
	Headless • Shell-on	Myanmar	Neptune	6/1.8 kg Block	6/8 - 8/12 ct/lb
	EZ-Peel	Vietnam • Bangladesh	Sea Port	10/2 lb IQF	13/15 - 41/50 ct/lb
	P&D • Tail-on • Raw	Vietnam • Bangladesh • India	Sea Port	5/2 & 10/1 lb IQF	4/6 - 61/70 ct/lb
	P&D • Tail-off • Raw	Vietnam • Bangladesh • India	Sea Port	5/2 & 10/1 lb IQF	16/20 - 51/60 ct/lb
	P&D • Tail-on • Cooked	Vietnam • India	Sea Port	5/2 & 10/1 lb IQF	8/12 - 61/70 ct/lb
P&D • Tail-off • Cooked	Vietnam • India	Sea Port	5/2 & 10/1 lb IQF	8/12 - 71/90 ct/lb	
White Shrimp	Head-on • Shell-on	Ecuador • Peru	White Pearl • Packer	10/4 lb Block	30/40 - 80/100 ct/lb
	Cooked • Head-on	Thailand	Sea Port	4/5 lb IQF	26/30 ct/lb
	Headless • Shell-on	Thailand • Vietnam • India • Indonesia	Sea Port • Packer	6/4 lb Block	16/20 - 91/110 ct/lb
	Headless • Shell-on	Mexico	Barlovento	10/4 lb Block	16/20 - 26/30 ct/lb
	Headless • Shell-on	Ecuador • Peru	Packer	10/4 lb Block	16/20 - 51/60 ct/lb
	Headless • Shell-on • Wild	Mexico	Barlovento	10/5 lb Block	U/8 - 13/15 ct/lb
	EZ-Peel	India • Indonesia • Thailand	Sea Port • OLA	10/2, 10/1, 20/1 lb IQF	13/15 - 71/90 ct/lb
	Cooked • EZ-Peel • Peel & Eat	Thailand	Sea Port	10/2 lb IQF	13/15 - 71/90 ct/lb
	P&D • Tail-on • Raw	Thailand • Vietnam • India • Indonesia	Sea Port	5/2 & 10/1 lb IQF	13/15 - 91/120 ct/lb
	P&D • Tail-off • Raw	Thailand • Vietnam • India • Indonesia	Sea Port	5/2 & 10/1 lb IQF	16/20 - 91/120 ct/lb
P&D • Tail-on • Cooked	Thailand • Vietnam • India • Indonesia	Sea Port	5/2 & 10/1 lb IQF	16/20 - 91/120 ct/lb	
P&D • Tail-off • Cooked	Thailand • Vietnam	Sea Port	5/2 & 10/1 lb IQF	21/25 - 200/300 ct/lb	
Freshwater Shrimp	Head-on • Shell-on	Thailand • Vietnam	Sea Port	12/2 lb SEMI IQF	1/2 - 8/12 ct/lb
	EZ-Peel	Bangladesh	Sea Port	10/2 lb IQF	4/6 - 21/25 ct/lb
	EZ-Peel • Grill Cuts	Bangladesh	Sea Port	10/2 lb IQF	4/6 - 21/25 ct/lb
Wild Argentine Red Shrimp	Headless • Shell-on	Argentina	Packer	10/2 lb IQF	8/12 - 26/30 ct/lb
	EZ-Peel	Argentina	Packer	10/2 lb IQF	8/12 - 26/30 ct/lb
	P&D • Tail-on • Raw	Argentina	Packer	5/2 lb IQF	13/15 - 31/40 ct/lb
	P&D • Tail-off • Raw	Argentina	Packer	5/2 lb IQF	13/15 - 31/40 ct/lb
Wild Oregon Pink Shrimp	Cooked & Peeled	USA	Packer	4/5 lb IQF	250/350 ct/lb
Wild Canadian Shrimp	Cooked & Peeled	Canada	Packer	4/5 lb IQF	90/125 - 250/350 ct/lb

CRAB/LOBSTER

PRODUCT	FORM	ORIGIN	BRAND	PACK	SIZE
Dungeness Crab	Sections	USA	Packer	1/25 lb IQF	Ocean Run
	Whole	USA	Packer	1/25 lb IQF	Ocean Run
Red King Crab	Leg & Claw	USA • Norway • Russia	Packer	1/20 lb IQF	4/8 - 20/up ct
Gold King Crab	Leg & Claw	USA • Russia	Packer	1/20 lb	6/9 - 20/up ct
Patagonian King Crab	Clusters	Chile	Packer	1/20 lb	300/700 g
Cold Water Atlantic Lobster	Tail	Canada	Packer	1/10 lb	3/4 oz - 16/20 oz
Lobster	Whole • Cooked	Canada	Packer	1/10 lb	16/20 oz - 20/24 oz
	Cooked • Claw & Knuckle Meat	Canada	Packer	6/2 lb	n/a
	Cooked • Claw, Knuckle & Leg Meat	Canada	Packer	6/2 lb	n/a
	Cooked • Broken Meat	Canada	Packer	6/2 lb	n/a
Warm Water (Spiny) Lobster	Tail	Bahamas • Brazil • Honduras • Belize • Colombia	Golfstream	4/10 lb IQF	5 oz - 24 oz
Snow Crab	Clusters	Canada • Norway • Russia • Greenland	Packer	1/30 & 1/20 lb IQF	4/8, 5/8, 8/10 & 10/12 oz/piece
	Cocktail Claw	Korea	Fish For You	12/2 lb IQF	21/30 & 31/40 ct/lb
	Combo	Korea	Sea Port	6/5 lb Block	70% Body/ 30% Leg & All Leg
	Combo	Canada • China	Packer	6/5 lb	70% Body/ 30% Leg
	Combo • Deep-water	China • Russia	Packer	6/5 lb	70% Body/ 30% Leg
Rock Crab	Combo	Canada	Acadian • Luxury	6/5 lb Block	80% Body / 20% Leg
	Salad Meat	Canada	Acadian • Luxury	6/5 lb Block	n/a
Lump Crab	Combo	China	Leader	24/1 lb Tub	70% Jumbo/ 30% Lump
Crawfish	Whole • Cooked	China • Egypt	Boudreaux	2/5 & 4/5 lb IQF	10/15 & 16/22 ct/lb
	Cooked • Tail Meat	China	Boudreaux	16/12 oz, 24/1 lb IQF	80/100, 100/150, 150/200, 200/up ct/lb
Brown/Pink Slipper	Tails	Thailand • Taiwan • China • Vietnam	Moonlake • Clipper's Catch • Hochico • Hsien Pin	2/5 & 6/5 lb IQF	U/1, 1/2, 2/4 & 4/6 oz/piece
Pink Slipper	Meat	Thailand • Taiwan • China • Vietnam	Packer	6/5 lb IQF	Broken, U/5, U/1, 1/2, 1/3 & 2/4 oz/piece
Langostino Lobster	Cooked	Chile	Sea Port	4/5 & 5/2 lb IQF	60/100, 70/120 & 100/200 ct/lb
Jonah Crab	Cooked Claw & Arm Triple Scored	Canada • USA	Kildare	4/5 lb IQF	5/7 & 7/10 ct
	Combo	Canada	Kildare • Luxury	6/5 lb Block	80% Salad Meat/20% Leg
Seafood Mix		Thailand • China	Sea Port • Clippers Catch • Jintown	20/1 lb IQF	*See Image

FISH

PRODUCT	FORM	ORIGIN	BRAND	PACK	SIZE
Atlantic Cod	Fillet	Greenland • Iceland	Packer	2/15, 3/14 lb Shatter Pack	16/32 oz
Barramundi	Fillet • Skinless • Boneless	Taiwan • China • Vietnam	Sea Port	1/10 lb IVP, CO, IWP	6, 8, 10, 12/14 oz
	Whole	Taiwan • China • Vietnam	Sea Port	1/40 lb	800/up g
Bass (Large Mouth)	Whole Round	Taiwan	Sea Port	1/40 lb IWP	400/600, 500/800 g
Bass (Striped)	Whole Round	Taiwan	Sea Port	1/40 lb IWP	400/600, 500/600 & 600/800 g
Butterfish	Whole	Ecuador	Pacfish SA	1/22 lb IQF	100/150, 150/200, 200/300, 300/up g
Chilean Sea Bass	Portions • Skinless • Boneless	Chile	Sea Port	1/10 lb IWP	6/8, 8/10, 10/12 oz
	Fillet • Skin-on	Chile	Packer	lbs	4/6-20/25 lb
Channel Catfish	Whole	Chile	Packer	1/40 lb	25/up lb
	Fillet	China	Packer	1/15 lb Bulk	3/5 thru 9/11 oz
Cod (Atlantic)	Fillet • Skinless • Boneless	Greenland	Royal Greenland	2/15 lb Shatter Pack	8/16 oz & 16/32 oz
Cod (Red)	Fillet • Skinless • Pin Bone	New Zealand	Talley's	1/10 kg Shatter Pack	2/4, 4/6, 6/8 & 8/12 oz
Dover Sole	Whole	Holland	Seataste	800/up g, 1/25 lb IQF, IWP	16/20, 20/24, 24/28 oz/piece
Emperor	Fillet	Indonesia	Indo Fiesta	1/10 lb	6/8 oz - 1/3 lb
Escolar	Steak	Taiwan	Sea Port	1/20 lb IVP	6/up oz
Grouper	Cleaned • Scaled	Indonesia	Ocean Bright	1/22 lb IWP	.5/1, 1/2 & 2/3 lb
	Fillet • Skinless • Boneless	Indonesia	Ocean Bright • Prima Star	4/10 lb IWP	4/6 thru 1/3 lb
Hamachi	Fillet • Skin-on	Japan	Rumi Japan	~30#/case IVP	2-2.5 kg & 2.5+ kg
	Loin • Skinless • Boneless	Japan	Rumi Japan	1/22 lb IVP	500+/600+ g
	Collar	Japan	Rumi Japan	1/22 lb • 5/VP	120+/150+ g
Hoki	Fillet • Skinless • Boneless	New Zealand	Talley's • Amaltal	3/15 lb, 1/10 kg Shatter Pack	4/6, 6/8, 6/UP, 8/12, 8/up oz
	Portions	New Zealand	Talley's	4/2.5 kg	4/5 oz + 5/6
Kingfish	Whole • Head-on • Gutted	China • India	Sea Port	1/60 lb IWP	5/10, 10/15, 15/25 & 25/up lb
	Steak	India • Taiwan • Indonesia	Sea Port • Prima Star • Hochico	1/10 lb IVP	4/6, 6/8, 8/10, 10/12 & 12/14 oz
Mahi Mahi	Fillet • Skin-on	Taiwan	Sea Port	1/50 lb IWP	1/2, 2/3, 3/4, 4/5, 5/6, & 6/UP lb
	Loin	Taiwan	Sea Port	1/50 lb IWP	1/3 lb
	Portion • Skinless • Boneless	Taiwan	OLA	1/10 lb IVP	4, 6, 8, 10 oz
Milkfish	Whole Round	Taiwan	Sea Port	1/40 lb IWP	300/500, 600/800, & 800/UP g
	Baby • Whole Round	Taiwan	Sea Port	20/2 lb IQF Bulk	100/300 g
Opakapaka	Cleaned • Scaled	Indonesia	Ocean Bright	1/22 lb IWP	.5/1, 1/3, 1/2 & 2/3 lb
	Fillet • Skin-on	Indonesia	Ocean Bright • Prima Star	4/10 lb IWP	4/6 thru 24/28 oz
	One-cut Fillet	Indonesia	Ocean Bright	4/10 lb IWP	6/8 thru 24/28 oz
Orange Roughy	Fillet • Skinless • Boneless	New Zealand	Tally's • Amaltal	1/10 kg Shatter Pack	4/6, 6/8, 8/12, 8/up, 12/up oz
Ornate Emperor	Fillet • Skin-on	Thailand	Kingfisher	4/10 lb IWP	6/8 oz
Pollock	Fillet • Skinless • Boneless	China	Sea Port	4/10 lb IQF	1/2, 2/4, 4/6, 6/8, & 8/10 oz
Pompano	Whole Round	China	Sea Port	1/40 lb IWP	400/600, 500/600, 600/800 g
Porgy (Nz Tai)	Whole Round	New Zealand	Talley's	1/10 kg IQF	11 - 25 ct/kg
Red Drum	Whole	Taiwan	Sea Port	1/40 lb IQF	600/800, 800/1200 g
Salmon (Atlantic)	Portions • Skinless • Boneless	Chile	Sea Port	1/10 lb IVP	4, 6 & 8 oz
	Fillet • Skin-on	Chile	Sea Port	1/22 lb IVP	2/3 lb/pc, Trim D & 3/4
	Poke Cube	Chile	Packer	14/1 lb IVP	Sashimi Grade
Salmon (Pink)	Skinless • Boneless	China	Sea Port	1/10 lb IVP	4 - 8 oz
Salmon Chum (Keta)	Fillet • Skin-on	China	Sea Port	1/25 lb IVP	1/3 lb/pc, Trim C
	Portions • Skinless • Boneless	China	Sea Port	1/10 lb IVP	6 & 8 oz
Scad	Cleaned • Scaled	Philippines	Sea Port	1/22 lb IQF Bulk	40, 50, 60, 70 ct/case
	Whole	Philippines • Taiwan	Sea Port	1/22 lb IQF Bulk	30 to 100 ct/case
Snapper	Cleaned • Scaled	Thailand • Indonesia	Kingfisher • Smiling Fish • Prima Star	1/22 lb IWP	.5/1, 1/2 & 2/3 lb
	Fillet • Skin-on • Collar-on	Thailand • Indonesia	Kingfisher • Smiling Fish • Prima Star	4/10, 1/10 & 1/20 lb IWP	2/4 - 24/28 oz, 1 - 3 lb
Striped Pangasius	Skinless • Boneless	Vietnam	Sea Port • Panga	1/15 lb IVP & Bulk	3/5 thru 9/up oz
Swordfish	Loin • Sashimi • A-Grade	Singapore	Packer	Approx 30#/Case IWP	4/8, 5/20, 8/20, 10/20 lb
	Steaks	Chile • Indonesia	Sea Port	1/10 lb IVP	6, 8, 10 oz
Tilapia	Gutted • Scaled	China • Taiwan	Sea Port	1/40 lb IWP	350/550, 550/750 & 750/up g
	Whole Round	China • Taiwan	Sea Port	1/40 lb IWP	400/600, 600/800, & 800/up g
	Fillet • Skinless • Boneless	China • Taiwan	Cnami	1/10 lb IVP & IQF Bulk 1/22 lb Styro	2/3 thru 11/up oz
Toothfish	H & G	New Zealand	Talley's • New Zealand Longline	Catch WT	4/8, 5.5/10, 8/12, 10/15, 15/20 & 20/30 kg
Tuna (Albacore)	Loin	Singapore	Packer	1/60 lb IWP	5/8 lb
Tuna (Yellowfin)	Loin	Vietnam • Indonesia	Packer	1/44 lb & 1/30 lb IVP	4/8 & 8/12 lb (Indo), 7/12 (Vietnam)
	Saku	Vietnam • Indonesia	Packer	1/10 lb & 2/11 lb IVP	A1, AA1, A2 & AA2 BLOCK
	Steak	Vietnam • Indonesia	Packer	1/10 lb & 1/20 lb IVP	4, 6, 8, & 10 oz
	Poke Cube	Indonesia	Packer	2/11 lb IVP	AA Grade & A1 Grade
	Maki Meat	Indonesia	Packer	2/11 lb IVP	n/a
Wahoo	Fillet • Skin-on	Taiwan	Sea Port	1/50 lb IWP	5/up lb
	Portions	China • Taiwan	Sea Port	1/10 lb IWP	6 & 8 oz
	Loin	Taiwan	Sea Port	1/50 lb IWP	2 lbs/up



Mahi Mahi



Tilapia



Orange Roughy



Striped Pangasius



Emperor



Salmon Portions



Frog Legs

AMPHIBIAN

PRODUCT	FORM	ORIGIN	BRAND	PACK	SIZE
Frog Legs	Saddle Off	China • Vietnam	Sea Port	6/5 lb IQF, IWP	2/4, 4/6, 6/8, 8/12, 13/15 & 16/20 pairs/lb

MOLLUSK

PRODUCT	FORM	ORIGIN	BRAND	PACK	SIZE
Sea Scallop	Processed	Canada • USA • Japan • Peru	Seiho • Eastern • Seatrade • Millennium	6/5, 2/5 lb IQF	U/10, 10/20, 20/30, & 30/40 ct/lb
Bay Scallop		China • Philippines	Sea Port	6/5 lb IQF	40/60 thru 200/300 ct/lb
Dry Sea Scallop		USA & Japan	Elite • Eastern • Hokkaido	6/5 lb IQF	U/10, 10/20 & 20/30 ct/lb
Weathervane Scallop		USA	Alaska Seafood	6/5 lb Block	10/20 & 30/40 ct/lb
Greenshell Mussel	Whole	New Zealand	Sea Port • Flavoursome	12/1 lb Vacuum Pack	Medium & Large
	Half-shell	New Zealand	Sea Port • Talley's • Gourmet	12/2 lb IQF	Small, Medium & Large
	Meat	New Zealand	OPC • Talley's	12/1 kg IQF	Small, Medium & Large
Chilean Blue Mussel	Whole	Chile	Sea Port	5/2 lb Vacuum Pack	Normal & Jumbo
	Half-shell	Chile	Sea Port	10/2 lb IQF Polybag	Medium
	Meat	Chile • China	Sea Port • Packer	2/5 lb IQF	Small & Medium
White Hard Clam	Whole Cooked	Vietnam	Sea Port	10/2, 20/1 lb VP	17/22, 22/28 ct/lb

CEPHALOPOD

PRODUCT	FORM	ORIGIN	BRAND	PACK	SIZE
Octopus	Whole	Indonesia • Philippines	Sea Port • Prima Star • Indo Fiesta • Smiling Fish	1/30 lb IQF & IWP Pinwheel & Ball	1/2, 2/4, 4/6, 6/8, & 8/up lbs
	Baby	Thailand • India • Vietnam	Sea Port	12/2 lb Block	5/15, 16/25 & 26/40 ct/kg
Spanish Octopus	Whole Raw	Spain	Fribo	lbs Tray & Flower	2/4, 4/6, 6/8, 8/12 lb/pc
	Cooked • Tentacle	Spain	Fribo	lbs Tray	n/a
Loligo Squid	Tube & Tentacle	China • Thailand	Sea Port • Fresh Catch • Leader • Jintown • KF	20/2.5 lb, 12/2.5 LB Block	3/5 & 5/8 inch
	Tube Only	China	Fresh Catch • Leader • Jintown • Ocean Best	20/2.5 lb Block	3/5 & 5/8 inch
	Tentacle Only	China • Thailand	Kingfisher • Fresh Catch • Leader • Jintown	8/3 lb IQF	Tentacles
	Rings & Tentacle	China • Thailand • Vietnam	Sea Port • Kingfisher • IOR • Leader • Fresh Catch	8/3 lb IQF (80% Rings / 20% Tentacles)	2 cm cut from 3/5" tube (reg. & lg.)
	Rings	China • Thailand • Vietnam	Sea Port • Kingfisher • IOR • Leader • Fresh Catch • Jintown	8/3 lb IQF	5/8" tube (lg.)
	Whole	California, USA	Angel Gate	12/3 lb Block	Ocean Run
Illex Squid	Tube	China • Taiwan	Sea Port	1/22 lb IQF	U/5, U/10 ct/kg
	Whole Round	Taiwan	Sea Port	1/35 lb IQF	400/up & 500/up g
Squid	Pineapple Cut	Taiwan	Sea Port	8/3 lb	Roll Shape
Arrow Squid	Whole	New Zealand	Amaltal	2/15, 1/10 kg	400/600 & 600/up g
	Headed & Gutted	New Zealand	Talley's	1/10 kg Block	U/200 g, 200/up g
Calamari	Steak	Taiwan	Sea Port	6/5 lb IQF	4/5 & 5/6 oz/piece

ASIAN SPECIALTY

PRODUCT	FORM	ORIGIN	BRAND	PACK	SIZE
Cooked Eel Fillet	Unagi	Taiwan • China	Cnami	1/22 lb IVP	8, 9, 10, 11 oz/piece
Imitation Crab		China	Sea Port • Fish for You • Viseafood	12/2.5 & 30/1 lb VP	Flake, Stick, Stick Minced Style
Seasoned Capelin Fish Roe	Masago	Taiwan	Cnami	12/1.1 lb Tub	Orange, Green & Red
Seasoned Flying Fish Roe	Tobiko	Taiwan	Cnami	12/1.1 lb Tub	Golden, Orange, Green, Black & Red
Seasoned Seaweed Salad	Wakame	Taiwan	Cnami	6/4.4 LB Tub & 12/1 lb Tub	n/a
Seasoned Flying Fish/Capelin Roe	Sushiko	Korea	Cnami	12/1.1 lb Tub	Orange
Seasoned Squid Salad	Teriyaki Ika	Taiwan	Cnami	6/4.4 lb Tub	n/a
Seasoned Squid Salad	Chuka Ika Sansai	Taiwan	Cnami	6/4.4 lb Tub	n/a
Cooked Octopus	Yanagidako	Japan	Daiichi • Marutsubo	1/22 lb IQF	3, 4, 5, 6, 7, 8, 9, 10 ct/cs

Place Your Order With Us!

Kirkland, WA 98033

Phone
(425) 827 2800

Fax
(425) 827 2828

Find detailed product
information and point-of-sale
brochures on our web site:

www.cport.net

Perth Amboy, NJ 08861

Phone
(732) 826 9400

Fax
(732) 826 8195



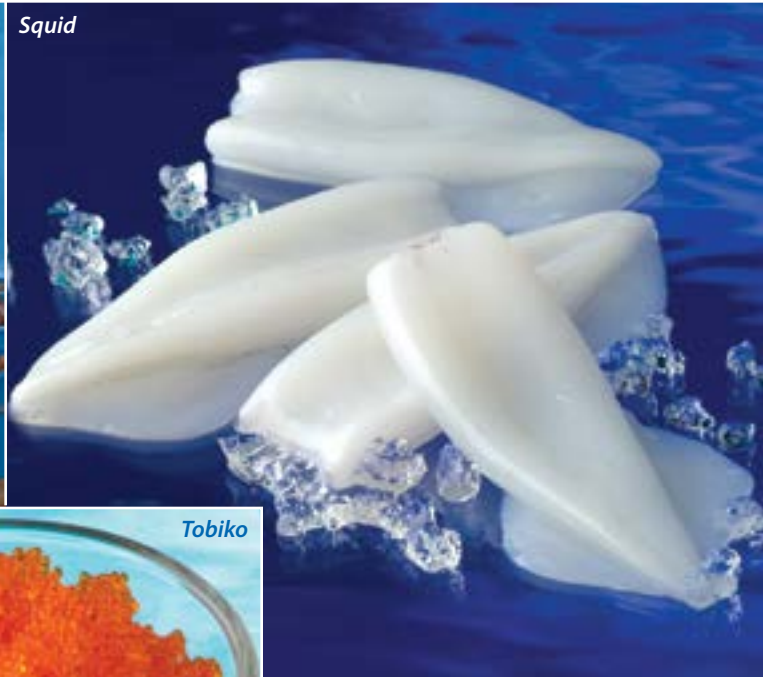
Sea Scallops



Greenshell™ Mussels



Octopus



Squid



Tobiko



Imitation Crab



Arrow Squid



SEA PORT PRODUCTS CORPORATION

phone: (425) 827-2800 | e-mail: sales@cport.net | www.cport.net