



SEA PORT®

PRODUCT CATALOG



SHRIMP

CRAB &
LOBSTER

SCALLOPS &
MUSSELS

SQUID &
OCTOPUS

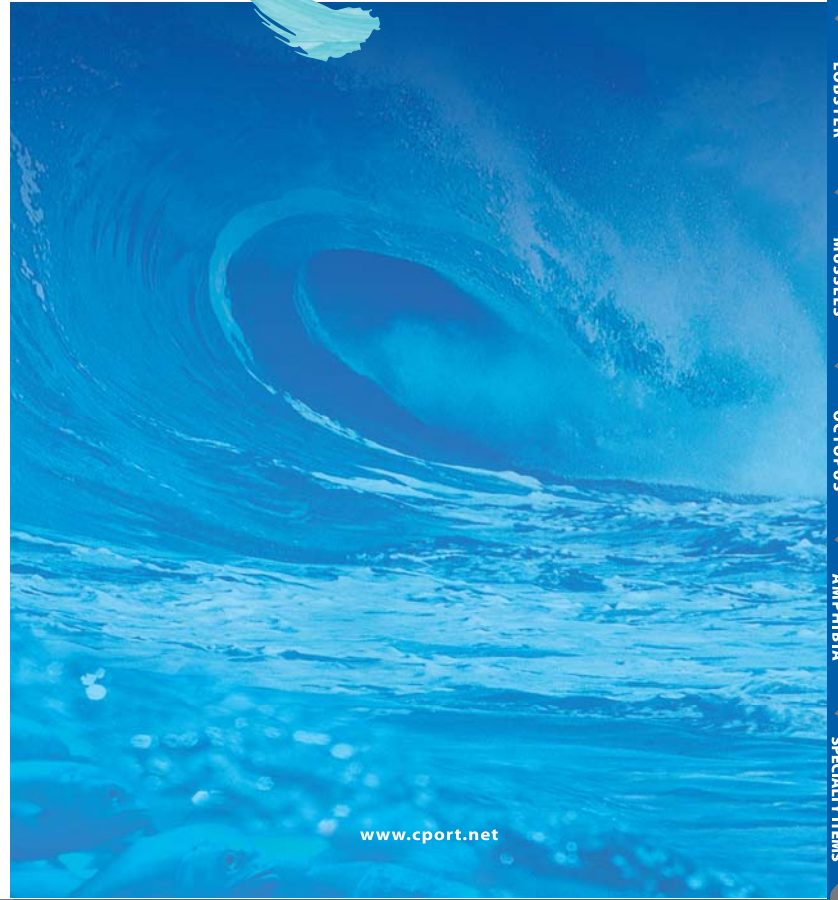
FISH &
AMPHIBIA

ASIAN
SPECIALTY ITEMS

www.cport.net



SEA PORT®



www.cport.net

SHRIMP

CRAB &
LOBSTER

SCALLOPS &
MUSSELS

SQUID &
OCTOPUS

FISH &
AMPHIBIA

ASIAN
SPECIALTY ITEMS

Top 10 Reasons To Buy From Sea Port

- 1. Access to Certified Seafood:** Satisfy customer demand for certified seafood products, including Best Aquaculture Practices (BAP) for farmed and MSC for wild.
- 2. Brand Power:** Strengthen your supply chain by getting seafood from multiple producers and regions in consistently branded packaging.
- 3. Cutting-Edge Technology:** Stay informed—check prices, place your order, and buy seafood online through our industry-leading website.
- 4. Efficiency:** Get the product you need faster through our nationwide distribution network.
- 5. Expertise:** Relax and rely on our 30 years' experience importing seafood.
- 6. Get Ahead:** Stay on top of the latest trends with our innovative Cnami, Ola, and Sea Port brands.
- 7. Get Connected:** Through us, you can demonstrate your commitment to the future of the seafood industry and sustainable seafood. Sea Port is a member of the National Fisheries Institute, the Global Aquaculture Alliance, and the Northwest Fisheries Association. To ensure sustainability of our blue planet, we have partnered with other associations aligned with our initiatives.
- 8. Save Big:** Get the best quality seafood at the best prices!
- 9. Service:** Enjoy unmatched customer service and industry knowledge.
- 10. Variety:** Choose from more than 50 species from 15 countries.

www.cport.net



Catch Our Wave.



SHRIMP

CRAB & LOBSTER

SCALLOPS & MUSSELS

SQUID & OCTOPUS

FISH & AMPHIBIA

ASIAN SPECIALTY ITEMS

PRODUCT CATALOG

CONTACT US

WEST COAST

131 7th Avenue West
Kirkland, WA 98033
Ph. 425.827.2800
Fx. 425.827.7125

EAST COAST

536 Fayette Street
Perth Amboy, NJ 08861
Ph. 732.826.9400
Fx. 732.826.8195

email: sales@cport.net

Products stored at the following locations:

LOS ANGELES

Showa Cold Storage
688 S. Alameda Street
Los Angeles, CA 90021
Phone: 213.627.1574
showacoldstorage.com

NEW YORK / NEW JERSEY

Preferred Freezer Services
536 Fayette Street
Perth Amboy, NJ 08861
Phone: 732.324.2000
preferredfreezer.com

CHICAGO

Preferred Freezer Services
2500 South Damen Ave.
Chicago, IL 60608
Phone: 773.847.1800
preferredfreezer.com

HAWAII

Unicold Corporation
3140 Ualena St.
Honolulu, Hawaii 96819-1965
Phone: 808.836.2931
unicoldcorp.com

SHRIMP

CRAB &
LOBSTER

SCALLOPS &
MUSSELS

SQUID &
OCTOPUS

FISH &
AMPHIBIA

ASIAN
SPECIALTY ITEMS

SHRIMP

PRODUCT	COUNTRY OF ORIGIN	BRAND	PACK	SIZES
BLACK TIGER PRAWNS				
HEAD-ON, SHELL-ON	Philippine, Vietnam & Bangladesh	Sea Port	10/1 LB BLOCK	6/8 - 26/30 ct/lb
HEADLESS, SHELL-ON	Vietnam		6/4 LB BLOCK	4/6 - 71/90 ct/lb
	Philippine	AA-1, Seabreeze & Tiger Ace	6/4 LB BLOCK	
	Indonesia	Bird River, PT Lola	6/4 LB BLOCK	
	India	Packer	6/4 LB BLOCK	
	Thailand	Seabreeze	6/4 LB BLOCK	
	Bangladesh	Packer	6/4 LB BLOCK	8/12 - 31/40 ct/lb
EZ PEEL	Vietnam & Bangladesh	Sea Port	10/2 LB ICF	13/15 - 41/50 ct/lb
COOKED EZ PEEL (PEEL & EAT)	Vietnam	Sea Port	10/2 LB ICF	16/20 - 41/50 ct/lb
P&D TAIL ON RAW	Vietnam, Bangladesh & India		5/2 & 10/1 LB ICF	4/6 - 61/70 ct/lb
P&D TAIL OFF RAW	Vietnam, Bangladesh & India	Sea Port & OLA	5/2 & 10/1 LB ICF	16/20 - 51/60 ct/lb
P&D TAIL ON COOKED	Vietnam & India		5/2 & 10/1 LB ICF	8/12 - 61/70 ct/lb
P&D TAIL OFF COOKED	Vietnam & India		5/2 & 10/1 LB ICF	8/12 - 71/90 ct/lb
WHITE SHRIMP				
HEAD-ON, SHELL-ON	Ecuador & Peru	White Pearl & Packer	10/4 LB BLOCK	30/40 - 80/100 ct/lb
COOKED HEAD ON	Thailand	Sea Port	4/5 LB ICF	26/30 ct/lb
HEADLESS, SHELL-ON	Thailand, India & Vietnam	Sea Port	6/4 LB BLOCK	16/20 - 91/110 ct/lb
	Indonesia	Bird River	6/4 LB BLOCK	16/20 - 71/90 ct/lb
	Mexico	Sonora	10/4 LB BLOCK	16/20 - 26/30 ct/lb
	Ecuador	Sea Diamond	10/4 LB BLOCK	16/20 - 51/60 ct/lb
HEADLESS, SHELL-ON, WILD	Mexico	Barbovento	10/5 LB BLOCK	0/8 - 13/15 ct/lb
EZ PEEL	Thailand & India	Sea Port & OLA	10/2 LB ICF	13/15 - 71/90 ct/lb
COOKED EZ PEEL (PEEL & EAT)	Thailand	Sea Port	10/2 LB ICF	13/15 - 71/90 ct/lb
P&D TAIL ON RAW	Thailand, India & Vietnam		5/2 & 10/1 LB ICF	13/15 - 91/120 ct/lb
P&D TAIL OFF RAW	Thailand, India & Vietnam	Sea Port & OLA	5/2 & 10/1 LB ICF	16/20 - 91/120 ct/lb
P&D TAIL ON COOKED	Thailand & Vietnam		5/2 & 10/1 LB ICF	16/20 - 91/120 ct/lb
P&D TAIL OFF COOKED	Thailand & Vietnam		5/2 & 10/1 LB ICF	21/25 - 200/300 ct/lb
FRESH WATER PRAWNS				
HEAD-ON, SHELL-ON	Thailand, Vietnam & Bangladesh	Sea Port	12/2 LB SEMI ICF	1/2 - 8/12 ct/lb
EZ PEEL	India & Bangladesh		10/2 LB ICF	4/6 - 16/20 ct/lb



Black Tiger Prawns

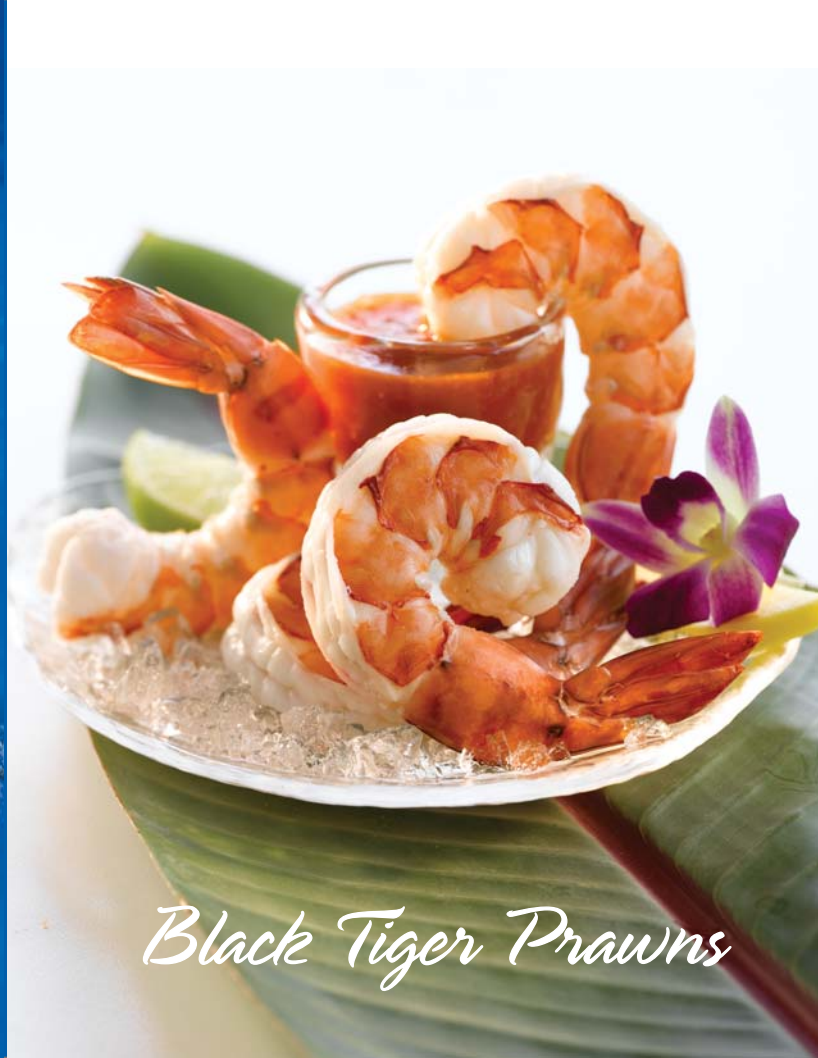
*Black Tiger Prawns
Headless Shell-On*



*Black Tiger Prawns
Cooked, Peeled & Deveined, Tail-On*



*Black Tiger Prawns
Peeled & Deveined, Tail-On*



Black Tiger Prawns



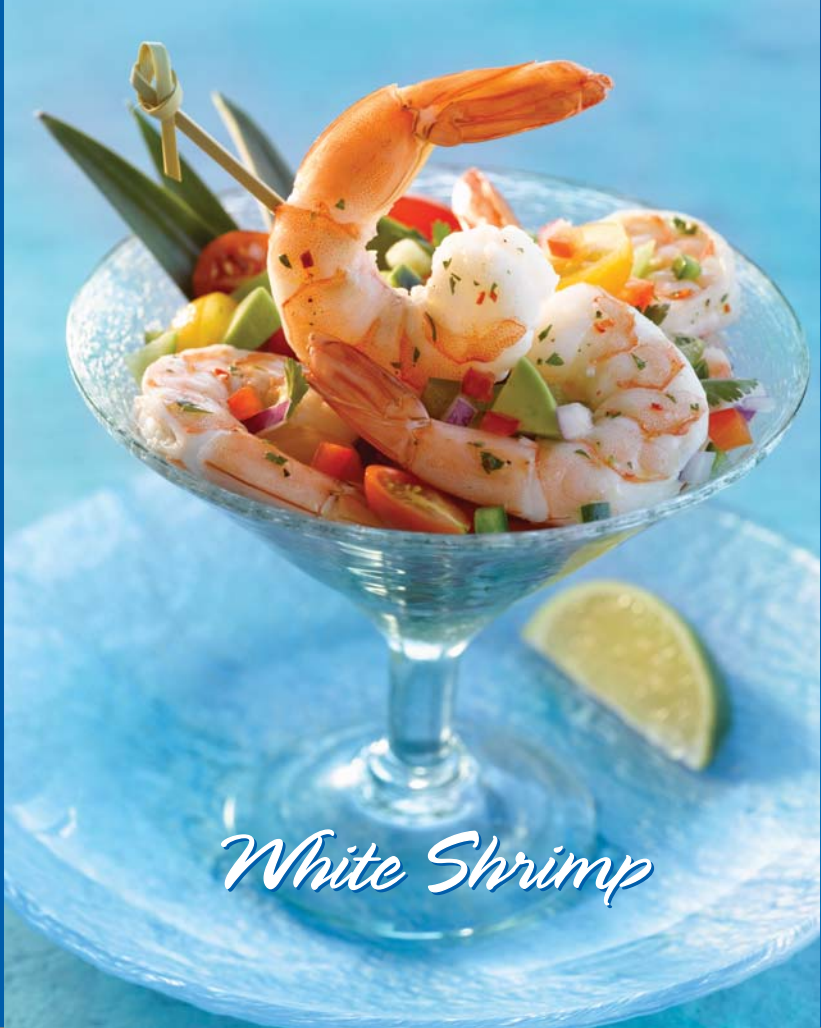
*Black Tiger Prawns
Peeled & Deveined, Tail-Off*



*Black Tiger Prawns
Head-On, Shell-On*



Black Tiger Prawns



White Shrimp



*White Shrimp
Headless, Shell-On*



*White Shrimp
Peeled & Deveined, Tail-On*



White Shrimp
Cooked, Peeled & Deveined, Tail-On



White Shrimp
Peeled & Deveined, Tail-Off



White Shrimp



White Shrimp
EZ Peel

Freshwater Shrimp





*Freshwater Shrimp
Head-On, Shell-On*



*Freshwater Shrimp
EZ Peel*

CRAB & LOBSTER

PRODUCT	COUNTRY OF ORIGIN	BRAND	PACK	SIZES
WARM WATER (SPINY) LOBSTER TAIL	Bahamas, Brazil, Honduras & Belize	Skaggs, Paradise	4/10 LB KGF	5 oz - 24 oz
RED KING CRAB - LEG & CLAW	USA, Norway & Russia	Sea Port	1/20 LB KGF	6/9 - 20/up ct
SNOW CRAB CLUSTER	Canada & Russia	Treasures From The Sea, M.F.Q. Packer	1/30 & 1/20 LB KGF	4/8, 5/8, 8/up & 10/ up oz/piece
SNOW CRAB COMBO	Korea	Sea Port	6/5 LB Block	70% BODY/ 30% LEG & ALL LEG
	Canada & China	Packer		65% BODY/ 35% LEG
ROCK CRAB COMBO	Canada	Acadian & Luxury	6/5 LB Block	80% BODY/ 20% LEG
ROCK CRAB SALAD MEAT	Canada	Acadian & Luxury	6/5 LB Block	
LUMP CRAB	China	Leader	24/1 LB Tub	70% Jumbo/ 30% Lump
WHOLE COOKED CRAWFISH	China	Hahaio & Seana	2/5 & 6/5 LB KGF	10/15 & 16/22 ct/lb
COOKED CRAWFISH TAIL MEAT			24/1 LB KGF	80/100, 100/150, 150/200 & 200/up ct/lb
BROWN/PINK SLIPPER TAILS	Thailand, Taiwan, China & Vietnam	MoonLake, Clipper's Catch, Hochico & Hsien Pin	2/5 & 6/5 LB KGF	U/1, 1/2, 2/4 & 4/6 oz/piece
PINK SLIPPER MEAT	Thailand, Taiwan, China & Vietnam		6/5 LB KGF	Broken, U/5, U/1, 1/2, 1/3 & 2/4 oz/piece
SEAFOOD MIX	Thailand	Sea Port	20/1 LB KGF	*Mussels, Shrimp, Baby Octopus, Surimi, Squid, & Cuttlefish
LANGOSTINO LOBSTER MEAT	Chile	Sea Port	5/2 LB KGF	60/100 & 100/200 ct/lb



Seafood Mix



Rock Lobster Tails



*Cooked
Whole Crawfish*



*Red King Crab
Leg & Claw*



*Cooked
Crawfish Tail Meat*

Langostino



Lump Crab Meat



Snow Crab Combo



Rock Crab Meat



Slipper Lobster Meat

Brown Slipper
Lobster Tails

Pink Slipper Lobster Tails

SCALLOPS & MUSSELS

PRODUCT	COUNTRY	BRAND	PACK	SIZES
PROCESSED SEA SCALLOP	USA & Japan	Seho, Eastern, Seatrade & Millennium	6/5, 2/5 LB RQF	U/10, 10/20, 20/30, & 30/40 ct/lb
BAY SCALLOP	China & Philippines	Sea Port	6/5 LB RQF	40/60 thru 200/300 ct/lb
DRY SEA SCALLOP	USA & Japan	Elite, Eastern & Hokkaido	6/5 LB RQF	U/10, 10/20 & 20/30 ct/lb
WHOLE GREENSHELL™ MUSSEL	New Zealand	Sea Port, Flavoursome	12/1 LB Vacuum Pack	Medium & Large
GREENSHELL™ MUSSEL ON THE 1/2 SHELL	New Zealand	Sea Port, Talley's & Gourmet	12/2 LB RQF	Small, Medium & Large
GREENSHELL™ MUSSEL MEAT	New Zealand	OPC & Talley's	12/1 KG RQF	Small, Medium & Large
WHOLE BLUE MUSSEL	Chile	Sea Port	5/2 LB Vacuum Pack	Normal & Jumbo
BLUE MUSSEL MEAT	Chile	Sea Port	2/5 LB RQF	Medium & Large



*Greenshell™ Mussels
On the 1/2 Shell*

SHRIMP

CRAB &
LOBSTER

SCALLOPS &
MUSSELS



*Whole
Blue Mussels*



Blue Mussel Meat



*Whole
Greenshell™ Mussels*



Sea Scallops

SQUID &
OCTOPUS

FISH &
AMPHIBIA

ASIAN
SPECIALTY ITEMS

SHRIMP

CRAB &
LOBSTER

SCALLOPS &
MUSSELS



Bay Scallops

SQUID &
OCTOPUS

FISH &
AMPHIBIA

ASIAN
SPECIALTY ITEMS

SQUID & OCTOPUS

PRODUCT	COUNTRY	BRAND	PACK	SIZES
OCTOPUS	Indonesia & Philippine	Sea Port, Prima Star, Indo Fiesta & Smiling Fish	1/30 LB IQF & BWP PINWHEEL & BALL	1/2, 2/4, 4/6, 6/8, & 8/OP lbs
BABY OCTOPUS	Thailand, India & Vietnam	Sea Port	12/2 LB Block	5/15, 16/25 & 26/40 ct/kg
BABY SQUID TUBE & TENTACLE	China & Thailand	Sea Port, Fresh Catch, Leader, Jintown & KF	20/2.5 LB, 12/2.5 LB Block	3/5 & 5/8 inch
LOLIGO SQUID TUBE ONLY	China	Fresh Catch, Leader & Jintown	20/2.5 LB Block	3/5 & 5/8 inch
LOLIGO SQUID TENTACLE ONLY	Thailand & China	Kingsfisher, Fresh Catch, Leader & Jintown	8/3 LB IQF	Tentacles
LOLIGO SQUID RINGS & TENTACLE	Thailand, China & Vietnam	Sea Port, Kingsfisher, BJR, Leader & Fresh Catch	8/3 LB IQF (89% RINGS / 20% TENTACLES)	2 cm cut from 3/5" tube (regular size) and 5/8" tube (large size)
LOLIGO SQUID RING	China, Thailand & Vietnam	Sea Port, Kingsfisher, BJR, Leader, Jintown & Fresh Catch	8/3 LB IQF	
ILLEX SQUID TUBE	China & Taiwan	Sea Port	1/22 LB IQF	U/5, U/10 ct/kg
SQUID WHOLE ROUND ILLEX	Taiwan	Sea Port	1/35 LB IQF	400/UP & 500/UP gm
SQUID WHOLE ARROW	New Zealand	Amaltal	1/13 & 1/30 KG BLOCK FAS	400/600 & 600/UP gm
CALAMARI STEAK	Taiwan, China, Peru & Korea	Sea Port	6/5 LB IQF	4/5 & 5/6 oz/piece
WHOLE CUTTLEFISH	Thailand	Sea Port	12/2.5 LB IQF	20/40, 40/50 ct/kg





Calamari



Calamari Squid Steak



Whole Baby Octopus

*Whole Octopus**Octopus Pinwheel*

Squid

Tubes, Rings & Tentacles



Illex Squid



Arrow Squid

MARINE FISH, F/W FISH & AMPHIBIA

PRODUCT	COUNTRY OF ORIGIN	BRAND	PACK	SIZES
FISH				
CHANNEL CATFISH FILLET	China	Packer	1/15 LB BULK	3/5 thru 9/11 oz
CHILEAN SEA BASS PORTIONS - SKINLESS, BONELESS	Chile	Sea Port	1/10 LB BWP	6/8, 8/10, 10/12 oz
BARRAMUNDI FILLETS - SKINLESS, BONELESS	Taiwan & Vietnam	Sea Port	1/10 LB BWP	6, 8, 10 oz
ESCOLAR STEAK	Taiwan	Sea Port	1/20 LB BWP	6/1up oz
GRROUPER - CLEANED & SCALED	Indonesia	Ocean Bright	1/22 LB BWP	.5/1, 1/2 & 2/3 lb
GRROUPER FILLET - SKINLESS, BONELESS	Indonesia	Ocean Bright & Prima Star	4/10 LB BWP	4/6 thru 10/12 oz
HOKI FILLET - SKINLESS, BONELESS	New Zealand	Tally's, Amalfi	3/15 LB, 1/10 KG SHATTERPACK	4/6, 6/8, 8/10P, 8/12, 8/10P oz
KINGFISH - WHOLE HEAD ON GUTTED	China & India	Sea Port	1/60 LB BWP	5/10, 15, 15/25 & 25/40 lb
KINGFISH STEAK	Taiwan, China & Indonesia	Sea Port, Prima Star & Hochico	1/10 LB BWP	4/6, 6/8, 8/10, 10/12 & 12/14 oz
LARGE MOUTH BASS - WHOLE ROUND	Taiwan	Sea Port	1/40 LB BWP	500/800 gm
MAHI MAHI FILLET - SKIN ON	Taiwan	Sea Port	1/50 LB BWP	1/2, 2/3, 3/4, 4/5, 5/6, & 6/10P lb
MAHI MAHI LOIN	Taiwan	Sea Port	1/50 LB BWP	1/3 lb
MAHI MAHI PORTION - SKINLESS, BONELESS	Taiwan	OLA	1/10 LB BWP	4, 6, 8, 10 oz
MILKFISH - WHOLE ROUND	Taiwan	Sea Port	1/40 LB BWP	300/500, 600/800, & 800/UP gm
BABY MILKFISH - WHOLE ROUND	Taiwan	Sea Port	20/2 LB BQF BULK	100/500 gm
OPAKAPAKA - CLEANED & SCALED	Indonesia	Ocean Bright	1/22 LB BWP	.5/1, 1/2 & 2/3 lb
OPAKAPAKA FILLET - SKIN ON	Indonesia	Ocean Bright & Prima Star	4/10 LB BWP	4/6 thru 24/28 oz
OPAKAPAKA ONE-CUT FILLET	Indonesia	Ocean Bright	4/10 LB BWP	6/8 thru 24/28 oz
ORANGE ROUGHY FILLET - SKINLESS, BONELESS	New Zealand	Tally's, Amalfi	1/10 KG SHATTERPACK	4/4, 4/6, 6/8, 8/12, 8/UP, 12/UP oz
ORNATE EMPEROR FILLET - SKIN ON	Thailand	Kingsfisher	4/10 LB BWP	6/8 oz
POLLOCK FILLET - SKINLESS, BONELESS	China	Sea Port	4/10 LB BQF	1/2, 2/4, 4/6, 6/8, & 8/10 oz
POMPANO - WHOLE ROUND	China	Sea Port	1/40 LB BWP	400/600, 500/600, 600/800 gm
PORGY (NZ TAD) - WHOLE ROUND	New Zealand	Tally's	1/10 KG KF	11 - 25 ct/kg
RED COD FILLET - SKINLESS, PIN BONE IN	New Zealand	Tally's	1/10 KG SHATTERPACK	2/4, 4/6, 6/8 & 8/12 oz
SALMON ATLANTIC PORTIONS - SKINLESS, BONELESS	Chile	Sea Port	1/10 LB BWP	4, 6, 8 & 8 oz
SALMON ATLANTIC FILLETS - SKIN ON	Chile	Sea Port	1/22 LB BWP	2/3 B/pic, Trim D
SALMON CHUM (KETA) FILLET - SKIN ON	China	Sea Port	1/25 LB BWP	1/3 B/pic, Trim C
SALMON CHUM PORTIONS - SKINLESS, BONELESS	China	Sea Port	1/10 LB BWP	6 & 8 oz
SALMON PINK PORTIONS - SKINLESS, BONELESS	China	Sea Port	1/10 LB BWP	4 & 6 oz
SCAD - CLEANED & SCALED	Philippine	RDEX Quality	1/22 LB BQF BULK	40, 50, 60, 70 ct/case
SCAD - WHOLE ROUND	Philippine	RDEX Quality	1/22 LB BQF Bulk	30 to 100 ct/case
SCARLET SNAPPER - CLEANED & SCALED	Thailand & Indonesia	Kingsfish Smiling Fish & Prima Star	1/22 LB BWP	.5/1, 1/2 & 2/3 lb
SCARLET & MALABAR SNAPPER FILLET SKIN ON			4/10 LB BWP	2/4 - 24/28 oz
STRIPED PANGASBUS - SKINLESS, BONELESS	Vietnam	Sea Port Panga	1/15 LB BWP & Bulk	3/5 thru 9/1up oz
STEELHEAD PORTIONS, SKINLESS, BONELESS	Chile	Sea Port	1/10 LB BWP	6 oz, 8 oz, 10 oz
STRIPED BASS - WHOLE ROUND	Taiwan	Sea Port	1/40 LB BWP	400/600, 500/600 & 600/800 gm
SWORDFISH LOIN, SASHIMI & A GRADE	Singapore	Packer		Approx 30# per case BWP
SWORDFISH STEAKS	Chile	Sea Port	1/10 LB BWP	6, 8, 10 oz
TILAPIA - GUTTED & SCALED	China & Taiwan	Sea Port	1/40 LB BWP	350/550, 550/750 & 750/up gm
TILAPIA - WHOLE ROUND	China & Taiwan	Sea Port	1/40 LB BWP	400/600, 600/800, & 800/up gm
TILAPIA "KIDUBIM" FILLET - SKINLESS, BONELESS	Taiwan & China	Cnami	1/10 LB BWP 6/8/9 Bulk 1/22 LB ST/RO	2/3 thru 11/up oz
TOOTHFISH H & G	New Zealand	Tally's & New Zealand Longline	Catch WT	4/8, 5.5/10, 8/12, 10/15, 15/20 & 20/30 kg
WAHOO FILLET - SKIN ON	Taiwan	Sea Port	1/50 LB BWP	5/1up lb
YELLOWFIN TUNA LOIN	Vietnam & Indonesia	Packer	1/44 LB & 1/30 LB BWP	4/8 & 8/12 lb (Indo), 7/12 (Vietnam)
YELLOWFIN TUNA SAKU	Vietnam & Indonesia	Packer	1/10 LB & 2/11 LB BWP	A1, AA1, A2 & AA2 BLOCK
YELLOWFIN TUNA STEAK	Vietnam & Indonesia	Packer	1/10 LB & 1/20 LB BWP	4, 6, 8, & 10 oz
YELLOWFIN TUNA POKÉ CUBE	Indonesia	Packer	2/11 LB BWP	AA Grade & A1 Grade
YELLOWFIN TUNA MAKI MEAT	Indonesia	Packer	2/11 LB BWP	N/A
AMPHIBIA				
FROG LEGS (SADDLE-OFF)	China & Vietnam	Sea Port	6/5 LB BQF BWP	2/4, 4/6, 6/8, 8/12, 13/15 & 16/20 pairs/lb

SHRIMP

CRAB & LOBSTER

SCALLOPS & MUSSELS

SQUID & OCTOPUS

FISH & AMPHIBIA



Atlantic Salmon Portions



Chum (Keta) Salmon Fillets & Portions



Atlantic Salmon Fillets



Barramundi Fillets

ASIAN
SPECIALTY ITEMS



Chilean Sea Bass



Chilean Sea Bass Portions



Escolar Steaks



Golden Pompano



Hoki
Whole & Fillets



Kingfish Steaks



Largemouth Bass
Whole



Mahi Mahi Portions



Mahi Mahi Fillet



Milkfish
Whole Round



*Opakapaka
Whole & Skin On Fillets*



*Pink Salmon
Fillets & Portions*



Orange Roughy Fillets



Pollock Fillets

SHRIMP

CRAB &
LOBSTER

SCALLOPS &
MUSSELS

SQUID &
OCTOPUS

FISH &
AMPHIBIA



*Red Cod
Whole & Fillets*



*Scad
Whole Round*



Striped Bass

ASIAN
SPECIALTY ITEMS



Scarlet Snapper
Whole & Skin On Fillets



Striped Pangasius Fillets



Striped Pangasius



Swordfish Steaks



Wahoo Fillet



Swordfish Loin



*Yellowfin Tuna
Loin & Steaks*

SHRIMP

CRAB &
LOBSTER

SCALLOPS &
MUSSELS

SQUID &
OCTOPUS

FISH &
AMPHIBIA



Tilapia Fillet



Tilapia
Whole & Fillets



Frog Legs (Saddle-Off)

ASIAN
SPECIALTY ITEMS

SHRIMP

CRAB &
LOBSTER

SCALLOPS &
MUSSELS

SQUID &
OCTOPUS

FISH &
AMPHIBIA



Frog Legs

SHRIMP

CRAB &
LOBSTERSCALLOPS &
MUSSELSSQUID &
OCTOPUSFISH &
AMPHIBIAASIAN
SPECIALTY ITEMS

ASIAN SPECIALTY ITEMS

PRODUCT	COUNTRY OF ORIGIN	BRAND	PACK	SIZES
COOKED EEL FILLET "UNAGE"	Taiwan & China	Cnami	1/22 LB VP	8, 9, 10, 11 oz/piece
EDAMAME	China	Marusei	20/1 LB OF	N/A
IMITATION CRAB	China	Sea Port, Fish for You	12/2.5 & 30/1 LB VP	FLAKE, STICK, STICK MINCED STYLE
SEASONED FLYING FISH ROE "TOBKIKO"	Taiwan	Sea Port	12/1.1 LB Tub	Orange, Green, Black & Red Color
SEASONED SEAWEED SALAD "WAKAME"	Taiwan	Cnami	6/4-4.18 Tub	n/a
SEASONED BABY OCTOPUS "AITSUKE IDAKO"	Taiwan	Cnami	6/4-4.18 Tub	n/a
SEASONED JELLYFISH "CHUKA KURAGE"	Taiwan	Cnami	6/4-4.18 Tub	n/a
SEASONED SQUID SALAD "TERIYAKI IKA"	Taiwan	Cnami	6/4-4.18 Tub	n/a
SEASONED SQUID SALAD "CHUKA IKA SANSAT"	Taiwan	Cnami	6/4-4.18 Tub	n/a
COOKED OCTOPUS "YANAGIDAKO"	Japan	Dalichi & Marutsubo	1/22 LB OF	3, 4, 5, 6, 7, 8, 9, 10 ct/cs



"Wakame"
Seasoned Seaweed Salad

SHRIMP

CRAB & LOBSTER

SCALLOPS & MUSSELS

SQUID & OCTOPUS

FISH & AMPHIBIA

ASIAN SPECIALTY ITEMS



Imitation Crab



Cooked Eel
"Unagi"



Seasoned Flying Fish Roe
"Tobiko"

SHRIMP

CRAB &
LOBSTER

SCALLOPS &
MUSSELS

SQUID &
OCTOPUS

FISH &
AMPHIBIA

ASIAN
SPECIALTY ITEMS



*Seasoned Baby Octopus
"Ajitsuke Idako"*



*Seasoned Squid Salad
"Teriyaki Ika"*



*Seasoned Jellyfish
"Chuka Kurage"*



*Seasoned Squid Salad
"Chuka Ika Sansai"*

Yanagi-Tako

Cooked Octopus

SHRIMP

CRAB &
LOBSTER

SCALLOPS &
MUSSELS

SQUID &
OCTOPUS

FISH &
AMPHIBIA

ASIAN
SPECIALTY ITEMS



OUR BRANDS...



SEA PORT®



Sea Port provides more than just seafood. We provide products and a name you can trust. We have a reputation that represents quality, versatility, consistency, ongoing relationships and competitive pricing. All of our brands have fresh, appealing packaging and are both foodservice and retail-ready. Our classic Sea Port® brand, also referred to as "Catch Our Wave" and "Wave" brand, offers the widest selection under one brand. From Shrimp to Squid, Mussels to Striped Pangasius, Sea Port is truly your "one-stop-shop" for branded frozen seafood. If you like the ease of buying with just one call, one stop, one name you can trust, let Sea Port be the brand to fill your freezer.

OLA!

BRAND



Discover OLA!® brand. "Ola" means "wave" in Spanish, and we created this brand to have a bold, bright, colorful appeal as well as to highlight some of the versatile ways seafood can be served. All packaging in OLA! brand includes product information in both English and Spanish. OLA! is the first brand to offer a 1 LB bag of IQF Peeled Shrimp. We send all our customers this message in a bottle: OLA! brand will surge your seafood sales!

Cnami



Our success as a branded supplier is dependent upon our relationships, how we relate to you and our entire distribution chain. Through our brands, we strive to make connections with our seafood buyers and consumers. We aim to provide brand lines that represent seafood as it should be - the protein with personality! Our sophisticated Cnami® brand features seafood products that will satisfy your Asian seafood needs. The current product line includes Tobiko, Eel, Seaweed Salad, and Tilapia; other products will soon be available in our Cnami brand.



Go Blue® is Sea Port's total commitment to seafood sustainability, seafood and our health, and social responsibility.

RESPONSIBILITY

Sea Port is committed to leading efforts to improve the way both wild and farmed seafood are produced on the high seas or on the farm. We are committed to sourcing from suppliers who are also committed to social justice and the wise and ethical use of all resources.

HEALTH

With new research findings emerging almost daily about the benefits of seafood in the diets of pregnant women, children, young adults, and seniors, Sea Port has made the commitment to helping people understand how adding seafood to the diet will benefit everybody.

PROSPERITY

Seafood is a cornerstone of the global economy. We believe that more free and transparent global seafood markets result in the greatest good for the greatest numbers.

SUSTAINABILITY

Sea Port is committed to supporting efforts to improve the sustainability of all seafood, wild and farmed. It is our belief that global demand for seafood will only be met through aquaculture -- the responsible farming of fish and shellfish. We are currently engaged in several initiatives to ensure that the seafood that is loved by everyone today will be available to generations of the future.



SUSTAINABILITY SPECTRUM

Catch Our Wave® to Sustainability

SHRIMP

CRAB & LOBSTER

SCALLOPS & MUSSELS

SQUID & OCTOPUS

FISH & AMPHIBIA

ASIAN SPECIALTY ITEMS



Catch Our Wave.

Sea Port is here to fulfill all your seafood needs - West Coast 425.827.2800 - East Coast 732.826.9400 - www.cport.net - sales@cport.net